



INPROTEC
Industrial Automation & Control

SAMPI-TOPTECH

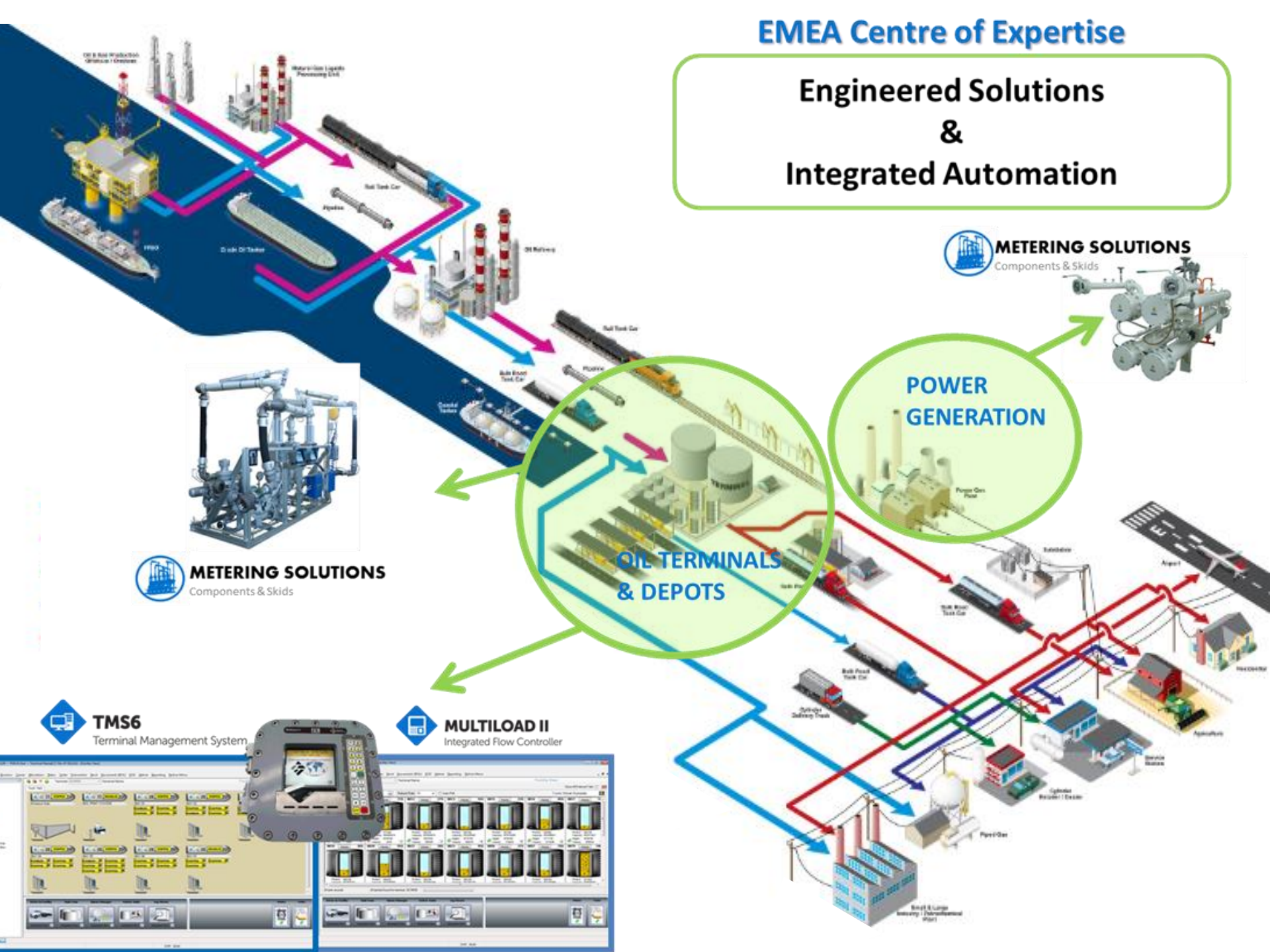
COMPANY OVERVIEW

INPROTEC

Industrial Automation & Control

EMEA Centre of Expertise

Engineered Solutions & Integrated Automation



>1500 installations worldwide



★ : Office Locations

Who we Serve?

- Power Plants
- Small to Large Terminals & Depots
- Bulk Plants
- Refineries
- Asphalt/Bitumen
- Transloading
- Chemical Applications
- Aviation Fueling
- Defense
- And more!

Our Products Deliver

> 3,75 m liters - >150.000 transactions - >2,5 m data points
Every Day!!!

SAMPI-TOPTECH

SOLUTIONS

Scalable Solutions for Your Needs

Hosted Solutions

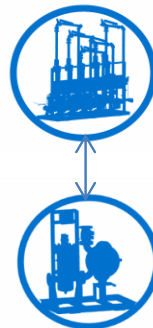
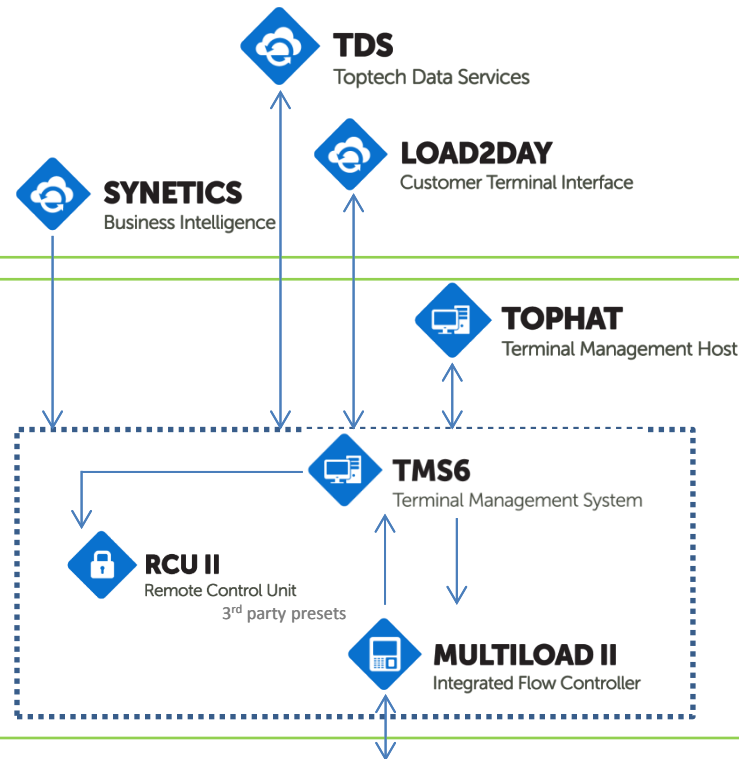
Offers a wide portfolio of data delivery, management and analytic tools to the midstream oil & gas / petro-chemical industry

Deployed Solutions

Recognized as industry standard solutions for terminal automation, centralized management and load-rack control

Metering Solutions

Experts and manufacturers of metering components (meters, filters, air eliminators, valves, ...) & skid solutions, including own design, engineering manufacturing and integration



SKIDS

COMPONENTS



Metering Solutions Overview



METERING SOLUTIONS

Components & Skids

COMPONENTS

- Manufacturer of :
 - Meters
 - Filters
 - Air Eliminator
 - Control Valves
 - Pumps
 - ...

Proprietary Components





Metering Solutions

Engineered Solutions for OIL TERMINALS



- Top / Bottom (un)Loading
- Custody Transfer
- Blending / Pumping
- Additive Injection
- LPG skid solutions
- Jet Fuel Solutions
- Defense solutions





Metering Solutions

Engineered Solutions for POWER GENERATION

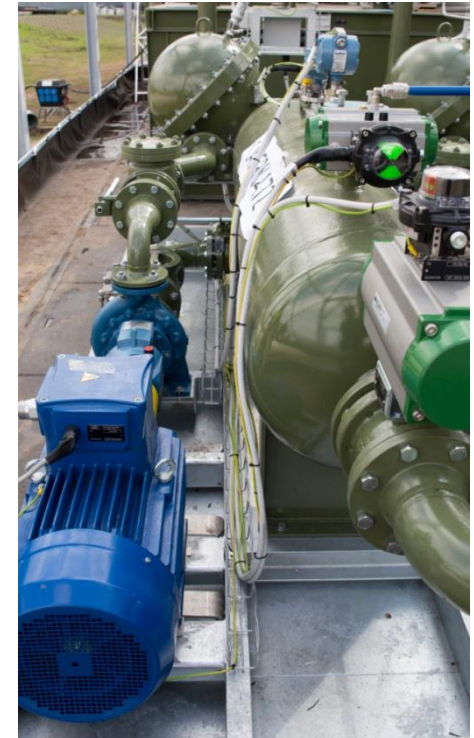
- Road & Rail Unloading
- Jetty Unloading
- Electrical Preheating
- Custody Transfer skid
- Forwarding & Metering skids





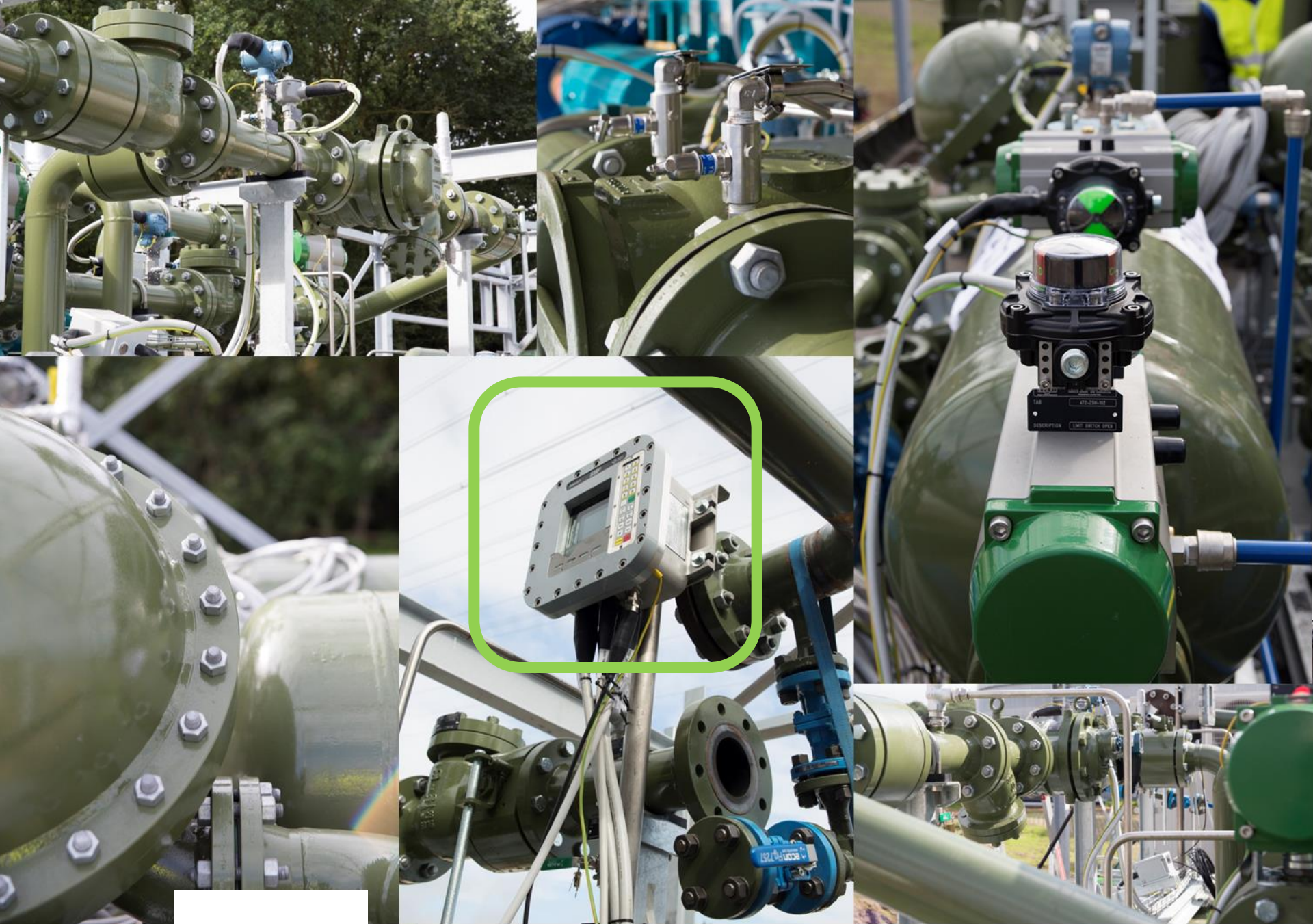
Metering Solutions +

- **Core Activity & Product(s)**
- Wide internal **IDEX product portfolio**
- **In House Ownership of Full Solution**
 - Highly Experienced People & Expertise
 - Broad & Flexible Engineering & Design capabilities - Scalable
 - Highest Quality Standards
 - Internal Manufacturing, Workshop & Testing Facilities
- **Performant & Competitive**
- **The Best Lead Times in the Industry**



Dedicated Expert Team that delivers the most **Performant & Competitive Solutions** for both the standard, and the highest demanding applications & challenges of our industry





Scalable Solutions for Your Needs

Hosted Solutions

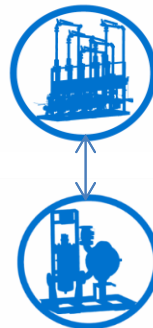
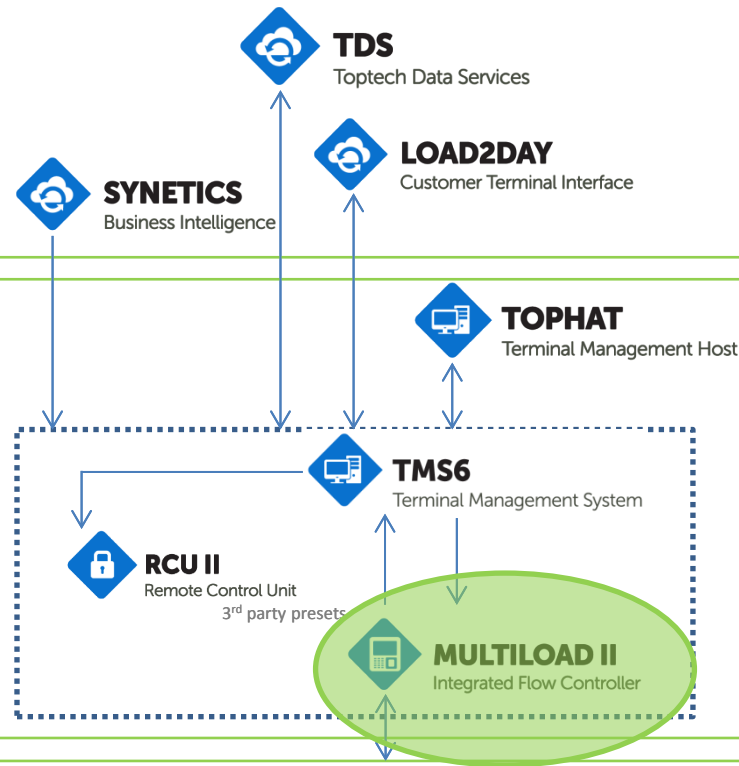
Offers a wide portfolio of data delivery, management and analytic tools to the midstream oil & gas / petro-chemical industry

Deployed Solutions

Recognized as industry standard solutions for terminal automation, centralized management and load-rack control

Metering Solutions

Experts and manufacturers of metering components (meters, filters, air eliminators, valves, ...) & skid solutions, including own design, engineering manufacturing and integration



SKIDS

COMPONENTS



MultiLoad II Overview

Overview

- Integrated Load Rack Control System
- Single Driver Interface for all loading in the bay.
- Open Interface

Why is MultiLoad Different?

- Designed specifically to accommodate Terminal Automation Systems
- Architecture: Fully Scalable control system
- Unlimited processing power
- Remote I/O



MULTILOAD II

Integrated Flow Controller

MultiLoad RCU (Remote Control Unit)



Zone 2



Explosion proof



MultiLoad FCM (Flow Control Module)



6 types

RCU II for Common Operator Interface



Handles all driver prompting and authorizations

- Driver Authorizations: ID & PIN
- Permissive: pending all authorization checks
- Order # Entry
- All Configuration and Transaction Storage
- Common Interface to wide variety of 3rd party presets, process controls, pump starts, injectors, meters and valve actuators

For off-scale loading

- Records Tare Weight and Sends to TMS6
- Records Gross Weight and Sends to TMS6
 - TMS6 calculates loaded quantity and prints BOL

Services Model

Pre –installation : IN HOUSE & REMOTE SERVICES

- Engineering & Design
- FAT
- Project Management Services
- Quality Assurance Services
- ISO9001 & ISO14001 certified
- System Configuration
- Development
- Issue Resolution and Troubleshooting
- Training

Internal Manufacturing, Workshop & Testing facilities (1600m²)

